



Agenda

Notice of a public meeting of

Young People Overview and Scrutiny Committee

To: Councillors Janet Jefferson (Chairman), Gillian Quinn (Deputy Chair), Val Arnold, Lindsay Burr, Stephanie Duckett, Mel Hobson, Cliff Lunn, Stuart Martin, John Mann, Zoe Metcalfe, Richard Musgrave, Joe Plant, Annabel Wilkinson.

Co-opted Members: T Cavell-Taylor, S Maltby, D Sharp, R Strachan and David Watson.

Date: Friday, 25th June, 2021

Time: 10.00 am

Venue: Virtual Meeting

Under his delegated decision making powers in the Officers' Delegation Scheme in the Council's Constitution, the Chief Executive Officer has power, in cases of emergency, to take any decision which could be taken by the Council, the Executive or a committee. Following on from the expiry of the Local Authorities and Police and Crime Panels (Coronavirus) (Flexibility of Local Authority and Police and Crime Panel Meetings) (England and Wales) Regulations 2020, which allowed for committee meetings to be held remotely, the County Council resolved at its meeting on 5 May 2021 that, for the present time, in light of the continuing Covid-19 pandemic circumstances, remote live-broadcast committee meetings should continue (as informal meetings of the Committee Members), with any formal decisions required being taken by the Chief Executive Officer under his emergency decision making powers and after consultation with other Officers and Members as appropriate and after taking into account any views of the relevant Committee Members. This approach will be reviewed by full Council at its July meeting.

The meeting will be available to view once the meeting commences, via the following link - www.northyorks.gov.uk/livemeetings. Recording of previous live broadcast meetings are also available there.

Business

1. Welcome and Apologies

2. Minutes of the meeting held on 26 February 2021

(Pages 3 - 6)

Enquiries relating to this agenda please contact Ray Busby Tel: 01609 532655
or e-mail ray.busby@northyorks.gov.uk

Website: www.northyorks.gov.uk

3. Any Declarations of Interest

4. Public Questions or Statements

Members of the public may ask questions or make statements at this meeting if they have delivered notice (to include the text of the question/statement) to Ray Busby of Policy & Partnerships (*contact details below*) no later than midday on. Each speaker should limit themselves to 3 minutes on any item. Members of the public who have given notice will be invited to speak:-

- at this point in the meeting if their questions/statements relate to matters which are not otherwise on the Agenda (subject to an overall time limit of 30 minutes);
- when the relevant Agenda item is being considered if they wish to speak on a matter which is on the Agenda for this meeting.

If you are exercising your right to speak at this meeting, but do not wish to be recorded, please inform the Chairman who will instruct those taking a recording to cease while you speak.

5. Chairmans remarks

Any correspondence, communication or other business brought forward by the direction of the Chairman of the Committee.

6. Outdoor Leisure Centres: Review

Presentation by Amanda Newbold, Assistant Director Education and Skills, Education and Skills (CYPS)

7. Portfolio Holder Statement and Update to Committee - County Councillor Patrick Mulligan

The Chair has invited the Portfolio Holder to give an update on educational issues facing the local authority

8. Special Education Needs Strategy: Update and Overview (Pages 7 - 30)

Presentation by Jane Le Sage, Assistant Director Inclusion, Inclusion (CYPS) and Chris Reynolds, Head of SEND Strategic Planning and Resources, Inclusion (CYPS)

9. Work Programme (Pages 31 - 36)

Report of the Scrutiny Team Leader

Barry Khan
Assistant Chief Executive
(Legal and Democratic Services)

County Hall
Northallerton

Date Not Specified

North Yorkshire County Council

Young People Overview and Scrutiny Committee

Minutes of the meeting held on Friday 26 February 2021 at 9.30am.

Present: County Councillor Janet Jefferson in the Chair.

County Councillors: Val Arnold, , Stephanie Duckett, Cliff Lunn, Zoe Metcalfe, Stuart Martin MBE, Richard Musgrave, Gillian Quinn, Joe Plant and Annabel Wilkinson.

Co-opted Members: Stephen Maltby (Primary Teacher Representative). David Sharp (North Yorkshire Youth), Ross Strachan (Secondary Teacher Representative)

Portfolio Holders: Cllrs Patrick Mulligan and Janet Sanderson.

Officers: Ray Busby (Principal Scrutiny Officer (Central Services)), Stuart Carlton, Howard Emmett (Assistant Director - Strategic Resources (CYPS) Integrated Finance (CSD, Amanda Newbold, Assistant Director Education and Skills, Education and Skills,

Apologies for absence were received from Councillor Lindsay Burr MBE, Tom Cavell-Taylor (Governor representative) and David Watson (North Yorkshire Sport)

Copies of all documents considered are in the Minute Book

209. Minutes

Resolved –

That the Minutes of the meeting held on 11 December 2021 having been printed and circulated be taken as read and be confirmed and signed by the Chairman as a correct record.

210. Any Declarations of Interest

There were no declarations of interest to note.

211. Public Questions

There were no public questions or statements

212. Portfolio Holder Statement and Update to Committee - County Councillor Patrick Mulligan

The Chair had invited the Portfolio Holder to give an update on educational issues facing the local authority.

Patrick Mulligan covered general issues around CYPS and schools budget, schools and online learning and the challenges to come around supporting schools to reopen. In particular, he highlighted his views that:

- Schools had adjusted well to the changed definition of the attendance of vulnerable children.
- Placing a requirement upon schools to provide remote learning had improved service across the whole county, especially in remote rural areas.
- It was too early to comment upon the then recently announced £700m package for further elements of the recovery support package so children and young people can catch up on missed learning and development due to the pandemic. In principle, he believed the idea of a Covid recovery grant – one that helps pupils catch up is a welcome approach. The expectation was that funding would go directly through the school route.

Getting the testing regime right would be extremely challenging, especially for secondary schools but, overall, he sensed there was high level of confidence that the return to schools had been prepared for well.

Resolved –

That the report be received.

213. Portfolio Holder Statement and Update to Committee - County Councillor Janet Sanderson

The Chairman had invited the Portfolio Holder to address the committee on the impact of the pandemic on NYCC children's social care.

Janet Sanderson covered the general impact of the pandemic on children's social care - what has been achieved, what has been learned, how we now understand and manage risk. The key priority had to be maintaining delivery of a service rated outstanding. Janet explained how proud she was that officers, given the opportunity to explore innovative service delivery, had done this – at least in part - by constantly adapting to virtual and remote working.

There were many examples of where through innovative and creative working, across boundaries and with partners, we are supporting families and the staff who work with them in a flexible way.

Coping with the demands of the pandemic on children's social care has had significant financial implications, but flexibility of service provision has most likely been crucial in mitigating those effects and managing risk.

Resolved –

That the information given be noted

214. Review of Traded Services in Education and Skills due to Covid-19

Considered –

Report considered by the Executive at its 16 February meeting which sought seek approval to implement immediate short-term solutions to address the financial shortfall facing the Outdoor Learning Service due to the impact of the Coronavirus pandemic.

The report raised the prospect of a strategic review of the service with the ambition to ensure a longterm sustainable operating model is developed and established, subject to detailed consideration and approval of a business case by the Executive later in 2021.

Amanda Newbold, Assistant Director Education and Skills, Education and Skills, introduced the report.

The committee supported the Executive's decision that, rather than mothballing, both sites be protected as soon as possible.

Amanda explained that the Executive also approved a strategic review being undertaken; one with the ambition of ensuring a long-term sustainable operating model is developed and established.

Recommendations resulting from the strategic review will be presented to the Executive later in the year.

Resolved-

- a) That the report be received.
- b) Members asked that this committee have the opportunity as early as its June meeting, to understand the key issues that review must address, and how it will go about its work.

215. Work Programme

Considered -

The report of the Scrutiny Team Leader inviting comments from Members on the content of the Committee's Programme of Work scheduled for future meetings.

The Chairman reported that whilst the Executive forward plan still included an item in relation to the Youth Accommodation Pathway, it was not expected that it would be considered anytime soon. Members reiterated their desire to effectively be a consultee once the proposals were subject to a formal consultation process.

Ray Busby advised that at the next meeting the committee will review progress on the Special Educational Needs and Disability (SEND) Strategy.

The Chairman advised of her interest in Elective Home Education (EHE) -the term used by the Department for Education (DfE) to describe parents' decisions to provide education for their children at home instead of sending them to school. She had noted from the Executive Monitoring document Best Start in Life, of the increasing numbers of parents who had opted for EHE. She asked that the committee review the circumstances around these figures.

Resolved –

That subject to the above, Members again confirmed the content of the Work Programme.

The meeting concluded at 11.20pm
RB

This page is intentionally left blank

Young People Overview and Scrutiny Committee

25 June 2021

OFFICIAL

Things to cover

- What has been done since last meeting
 - Property
 - Engagement
 - Data Gathering
- What is happening next
- Timeline

Property

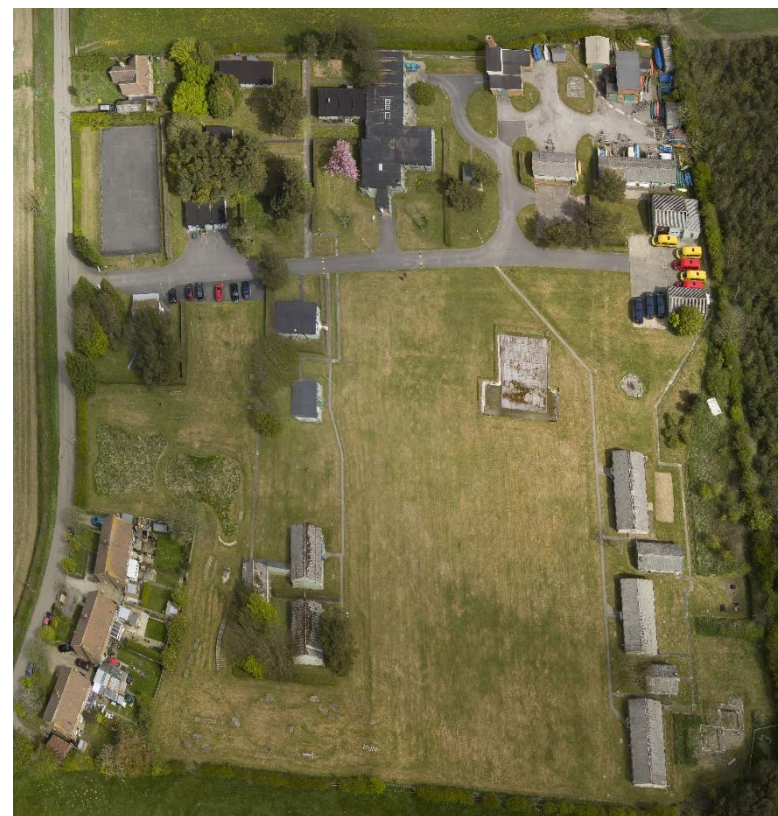
Page 9



OFFICIAL

East Barnby

Page 10



Bewerley Park



OFFICIAL

Engagement

Page 12



OFFICIAL

Engagement Summary

Method	Audience	Number / Result
School Questionnaire	Schools in NY, groups and schools who use the centres outside NY, governors	182 responses (350 sent out)
User Group	Representatives from Schools	2 meetings held, rep from group on Project board
Public Questionnaire	Member of the public who emailed the review	80 responses
Staff Questionnaire	Staff who work in the service	27 responses
Parish/Town Council Meetings	Local Councillors	3 attended
Press Release, Social Media	Public	
Art Project	Young People	9 Schools taken part approx. 200 drawings
Individual Conversations / Meetings	Staff groups, NY Sport, Head Teacher Network, School Governors etc..	Approx 20 meetings

'My Ideal Outdoor Learning Centre'



...from the minds of North Yorkshire's children

Data Gathering

- Location of customers
- Who are the customers
- How many people use the service and when
- Cost of operating the service
- Activities undertaken through the service
- Feedback from engagement

Next Steps

- Modelling of options
- Preparation of the Outline Business Case
- Outline business case through assurance and governance boards
- Outline business case to Exec

Timeline

	June		July		July		August					September		
	21st	28th	5th	12th	19th	26th	2nd	9th	16th	23rd	30th	6th	13th	20th
Outline Business Case Consultation / Sign Off	CYP Scrutiny - (25 June)	INFORMAL Discussions. E.g. SRMT 06/07 - M'tment Board to BP		Sign Off Sponsor / Finance AD	Quality Assurance			CYPS Programme Board (12 Aug)	Strategic Ops (18 Aug)		Programme Board (31 Aug)		Papers for Exec	Exec (21 Sept)
Project Governance		Team		Board		Team		Board		Team		Board		
User Group		Date to be arranged												
Comms													Press Release	
Gather Data			Finalise Options Appraisal											
		Quantify and develop options												

This page is intentionally left blank

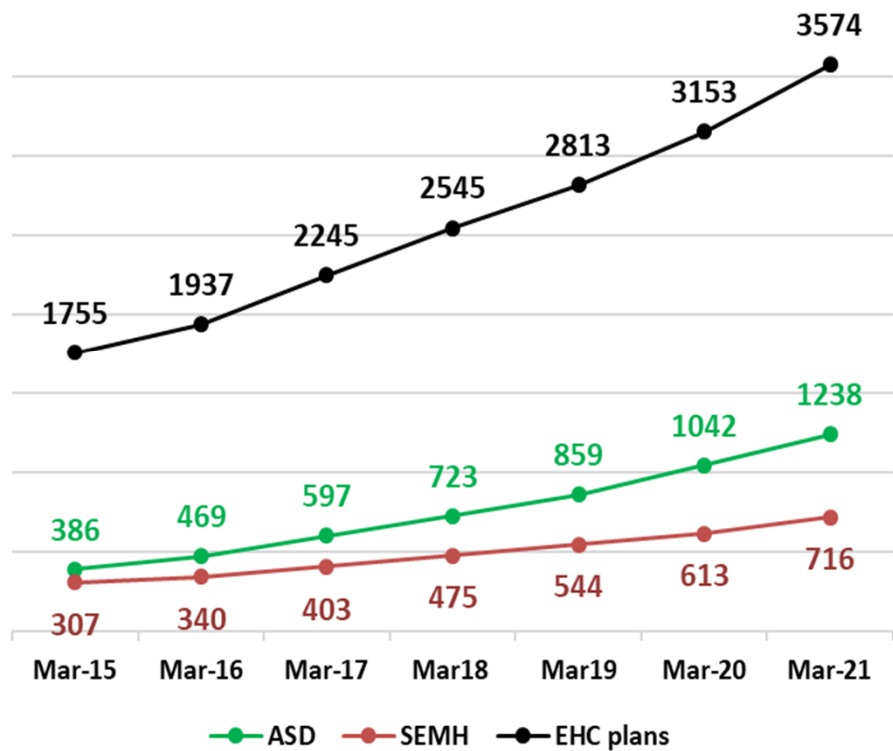
Update on the education of children with SEND

Children and Young Peoples Scrutiny Committee
25th June 2021

During this presentation we will cover:

- Trends in numbers and type of SEND
- Locality based infrastructure
- Progress against the SEND Strategic Plan

EHC plans in North Yorkshire



1.4% of school population (2020 data)

As of the end of March 2021, there were 3574 EHC plans funded by North Yorkshire.

- This is a **102%** increase on the same point in 2015 (following the new SEN CoP).
- The primary needs with the most prominent increases for EHC plans during this period have been:
 - Autistic Spectrum Disorder: **+221%** (386 to 1238)
 - Social, Emotional, Mental Health: **+133%** (307 to 716)

EHC plans in North Yorkshire – Localities and Primary needs

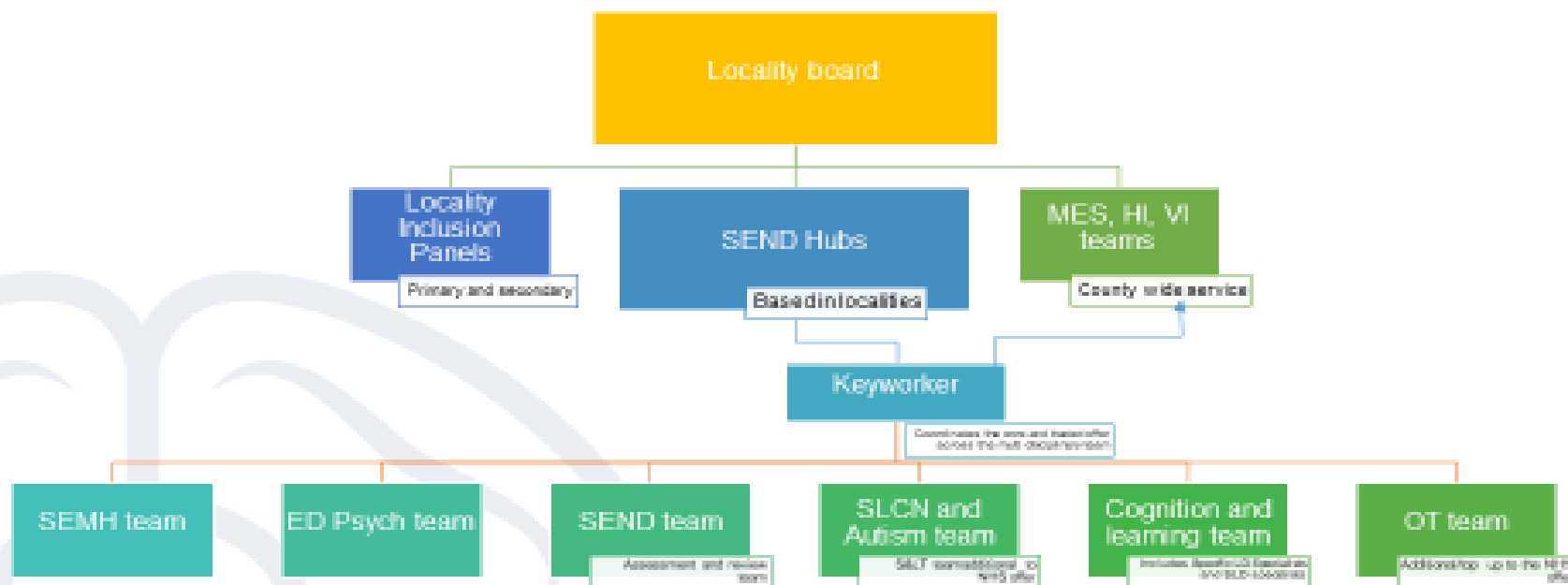
Locality	2021 Total	% Increase since Jan 2015
Craven	285	+77.0%
Hambleton and Richmondshire	727	+85.0%
Harrogate and Knaresborough	951	+96.9%
Scarborough, Whitby, Ryedale	907	+116.5%
Selby	549	+112.8%
Other	31	+121.4%
North Yorkshire Total	3450	+99.7%

Locality	Primary Need				% of Total
	C&I	SEMH	Sensory	C&L	
Craven	8.6%	8.2%	10.0%	6.9%	8.3%
Hambleton and Richmondshire	22.8%	18.2%	21.4%	20.2%	21.1%
Harrogate and Knaresborough	30.2%	23.8%	29.8%	25.1%	27.6%
Other	0.7%	2.5%	0.0%	0.5%	0.9%
Scarborough, Whitby, Ryedale	21.5%	31.8%	20.9%	32.4%	26.3%
Selby	16.3%	15.5%	17.8%	14.9%	15.9%

SEND Locality Based Approaches

Overview of Working Together at Locality

SEND Hubs



Page 24



OFFICIAL - SENSITIVE

OFFICIAL - SENSITIVE

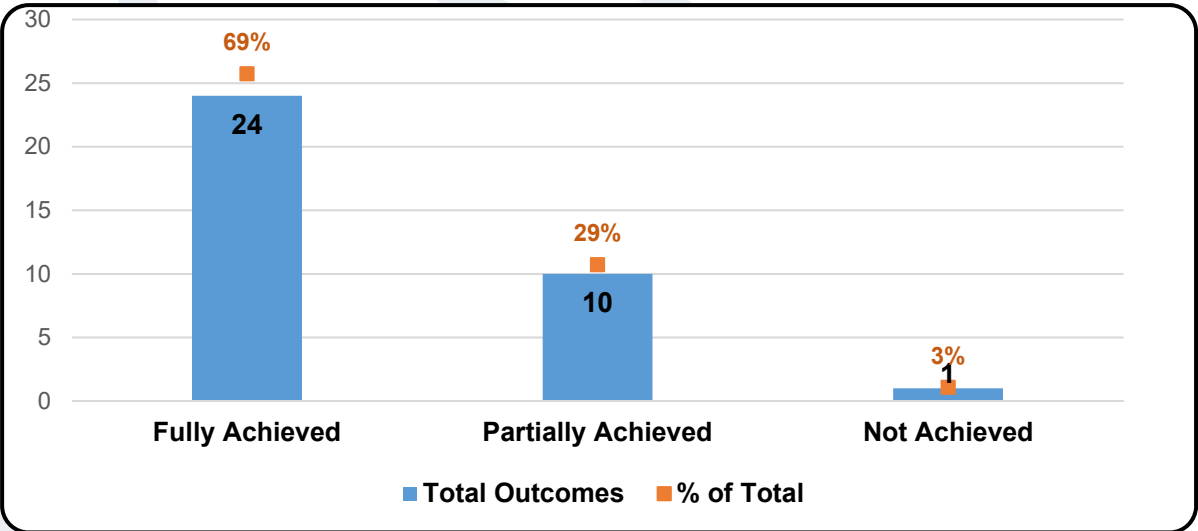
SEND Hubs

- 4 multi disciplinary teams made up of specialist teachers, practitioners, educational psychologists, SEN caseworkers and speech and language therapists
- Provide direct support to schools and settings in terms of:
 - Early identification and support
 - Direct intervention and support for children and young people with SEND
 - Training and building capacity in schools and settings
 - Lead on the statutory assessment process for Education, Health and Care Plans
- Operate a key worker model allocated within 1 week of referral who will be in touch within 2 weeks of referral
- Offer surgeries / drop-ins for generic advice and support
- Co-ordinate input to provide a seamless service across specialist teams
- Increased support for families- alongside Early Help, Children and Families and NHS colleagues
- Post implementation review of the Inclusion restructure received largely positive feedback with staff feeling confident in their role and well supported

Hub Delivery

Page 26

SEND Hub	C & L (Early Dev)	C & L (Learning Diff.)	C & L (Portage)	C & I (ASD)	C & I (SLCN)	Hearing Imp	Medical Edu. (Mov & Hand)	MES	SEMH	Visual Imp	Total
<Unknown>	2				2	3		1	1		9
Craven	1	6	6	12	5	32	3	11	20	25	121
Ham/Rich	11	54	22	23	13	63	4	21	48	36	295
Harrogate, Knares, Rip	10	12	13	83	19	72	8	3	60	47	327
Other LA						4				3	7
Scarb, Whi, Rye	9	19	36	37	16	109	9	30	43	44	352
Selby	4	13	12	26	11	40	3	14	21	24	168
Total	37	104	89	181	66	323	27	80	193	179	1279



Locality Boards

- Evolved from the SEND Strategic Plan for Educational Provision building on the ISOS review in 2016 where local leaders stressed their interest in being involved in developments at local level. They now include School Improvement functions to ensure 'join up' across education
- Partnerships between education leaders across 0-25 and the local authority and provide a framework to enable dialogue and collective responsibility for performance at local level, sector led improvement and shaping provision and developments in the area on an ongoing basis
- All 5 Boards established – Craven, Selby, Harrogate/Knaresborough/Ripon, Ryedale and the Coast and Hambleton/Richmondshire
- Locality Boards have identified priorities for improvement in 21/2 and partnership working is becoming embedded

Locality Inclusion Panels

- The Panels take responsibility for oversight of educational provision for vulnerable children at primary and secondary
- Have replaced the former 'collaboratives' and are established in the 5 locality areas from September
- Representatives must have delegated decision making powers if not a Head teacher
- Some are now co-chaired between a School leaders and SEND Hub Managers
- Progress and identified issues are reported to the Locality Boards
- Panels oversee admissions to Alternative Provision

Functions of the Inclusion Panels

- In Year Fair Access Protocol administration – this could include discussion of a child who is EHE whose parent would like a school place
- Access to North Yorkshire Alternative Provision (NYAP) for secondary age pupils
- Access to flexible places in the targeted provisions – primary and secondary
- Solution focussed approach to supporting children referred to the Panel
- Regular monitoring of children on part time timetables, EHE, attending flexible places in TP or PRS
- Overview of pupil progress in NYAP and targeted provisions (on a rota basis, not all presented each meeting), including readiness for reintegration

Parent Carer and Young People Voice

- Parent Carer Voice established in 2019 to replace NYPACT as the recognised SEND Parent Forum. 300 members at present
- Working to establish a locality based model of parent/carers groups in partnership with the local authority
- Involvement in key reviews of services eg social care support for disabled children, development of the new SEND Local Area strategy
- Schedule of meetings established across localities: Let's Talk eg Let's Talk sensory needs, Let's Talk Social Care to blend consultation with top tips and info for families
- Additional sessions from PCV on hot topics for parents- eg this term a series of sessions on sleep with the Sleep Clinic
- SENDIASS steering group now has representatives from all major parent carer groups

SEND Strategic Plan for Education Provision 2018-23

Strategic Plan Content

Plans focus is on developing the continuum of education provision across the county for now and the future. It is set out across:

Universal

Targeted

Specialist

It was updated in 2019 to also include our intentions and aspirations with regards to SEND capital investment and joint commissioning.

Key activities and progress

Universal

SEND Hubs Implemented

Quality Assured CPD Offer

- Reviewed and revised our offer to parents
- Ongoing work to trial accreditation and downloadable course

Between March 2020 and May 2021:

- 88 training courses have been delivered
- 1318 people attended the courses
- 153 evaluation forms have been submitted
- Over 69% said that the course content was excellent, and over 25% said it was good

□ Relationship based approaches

- 18 schools are now participating in the Pivotal programme across the county
- Opportunities area have commissioned Nurture training in Scarborough for 24 schools
- Sidewalk transition project is working with 56 vulnerable year 6 pupils transitioning to secondary and 92 secondary aged pupils providing mentoring
- Evaluation of impact to be undertaken by January 22



Universal cont....

Governance

Locality Boards- Now operational in all localities. All are now developing detailed action plans to address local priorities for Inclusion and School Improvement

Local Area Inclusion Panels- Established in September 2020 to promote collective oversight of children experiencing difficulty, FAP and utilisation of available provision

Communication with Parents

- Funding from CCGs has enabled investment in SENDIASS and PCV social media
- Development of partnership working 'statement of intent' underway

Targeted

PRS Model and Funding fully implemented as planned Sept 2020 £1.2m annual saving

New model reflects an early intervention model to provide support for children at risk of permanent exclusion.

- Joint commissioning arrangement with schools £18k plus £5k school contribution
- Places accessed via local panel-Schools taking ownership of finite resource
- Full year effect of new model impacted by pandemic and will be reviewed in 2022

Independent Alternative Provision Monitoring

- New Directory for schools and parents designed and published
- Minimum standards framework embedded
- Comprehensive schools guidance to assist commissioning and monitoring to be published July 2021

Education other Than at School (EOTAS)

All areas now in one service area – Elective Home Education, Medical Education, Attendance and EOTAS packages



Targeted Mainstream Provisions

- Around 8 full time places per school
- Typically 6 young people with an EHCP and 2 flexible places
- Financial resource provided on a place basis in line with national guidance (similar formula to special schools)
- Offer bespoke timetables that allow access to mainstream curriculum and additional support and therapies
- All provisions will have enhanced access to Occupational Therapy, Speech and Language Therapy and Educational Psychology
- Most likely to support children at band 6 and 7
- Specialise in SEMH and/or C&I

Targeted cont...

Targeted Mainstream Provisions

- Some delay due to pandemic
- First 3 provisions began operation in Jan 2021:
 - Grove Road CP,
 - East Whitby Academy
 - Holy Family
- Early feedback is very positive both from school and parents
- 5 further provisions at various stages of development-Sept 2021 onwards
- Our Strategic Plan sets out the delivery of 31 provisions are needed across the county

TMP Parental Feedback

Parent Feedback

Since our son joined the House at Grove Road, in year 6, it is **the first time that we as parents have not been worried about him during the school day.** We didn't realise **until he was at Grove Road that we had previously been constantly on edge all day, waiting for a call from the school telling us there was a problem.**

Our son loves going to school now. He is able to access learning in a way that he feels he has some control over, and this flexibility means the teaching staff are able to skilfully introduce him to new topics that he would have otherwise refused to engage in, such as baking. They are also able to use the topics and subjects he loves as a means to flexibly engage him in the wider curriculum - without rigidly following a timetable or structure.

Our son has told us that other schools know what autism is, but they don't understand it. At the House, they "get it", and he feels able to be himself.

Demand for Specialist Capacity

Future Growth in EHCPs

2021	2022	2023	2024	2025	2026
3450	3622	3825	3944	4079	4225

Based on current Trends:

- Expect a 24% rise in the number of EHCP's to 2026
- 1258 Special Places in North Yorkshire Special Schools by 2026-Increase of 243 places
- 190 places in High Cost Independent Provision- Increase of 36 places

Total: 329 places

Every % point reduction in Mainstream School placements adds further pressure of 25 places per year into specialist provision

Building Specialist Capacity

- **Increased Special School places** to over **1000** Sept 2021- 25% increase since 2017
- **Capital investment in creating Mowbray Ripon** complete- 60-65 place C&I primary provision-Circa £700k investment
- **Selby Free School** now at design phase. Wellspring announced as the MAT to run 100 place school
- **£250k investment in Springwater** on track for delivery Sept 21

Capital Business case progressing to:

- Develop further provision for SEMH and ASD
- Deliver TMPs
- Improve NYCC Specialist facilities

OFFICIAL - SENSITIVE

Capital Investment in SEND Provision

£234k SPCF remaining (already committed to TMPs)

£716k HNPCA allocated by DfE March 2021 (lowest per head figure of all 149 LAs)

£7.55m over 5 years from SCG (forecast sum reduced in the light of DfE modification of SCG formula allocations)

Currently prioritising and rationalising investment programme due to limitations of capital 'pot'

Targeted Mainstream Provisions initially, prioritising 23 instead of required 31-
£3m allocation

Special Capacity and Reducing £9m annual Independent Provision

We need to continue to develop further capacity in the Special school sector due to the ongoing and increasing cost of Independent provision and to meet demand.

Challenge is the limitation of our capital allocations

This page is intentionally left blank

North Yorkshire County Council

Young People Overview and Scrutiny Committee

25 June 2021

Work Programme

1.0 Purpose of Report

- 1.1 This report invites Members to consider the committee's work programme for 2020/21, taking into account the outcome of discussions on previous agenda items and any other developments taking place across the county.
- 1.2 The work programme schedule is attached at Appendix 1.

2.0 Scheduled Committee dates/Mid-Cycle Briefing dates

2.1 Committee Meetings

- Friday 3 September 2021 at 10am
- Friday 10 December 2021 at 10am

Mid Cycle Briefing Dates

- Friday 23 July 2021 at 10am
- Friday 15 October 2021 at 10am
- Friday 28 January 2022 at 10am
- Friday 14 April 2022 at 10am

3.0 SACRE Annual Report

- 3.1 A number of members of this committee serve on the North Yorkshire Standing Advisory Council on Religious Education. At a recent SACRE meeting, its Annual Report for the School year 2019/20 was agreed for publication.
- 3.2 The report stands on its own - it needs no confirmation from any other body or committee of the council. The SACRE Chair and supporting officers wanted to raise awareness of the work SACRE does. The Annual Report was an ideal starting point and was therefore taken to a members' briefing in May.
- 3.3 The SACRE chair and supporting officers explained :
 - Its work in advising the Local Authority on matters related to Religious Education and Collective Worship.
 - Its governance and constitution - how it relates to local authority and to schools
 - Background to Religious Education in North Yorkshire
 - Trends and what they mean - A walk through the figures - prevalence in primary and secondary

- 3.4 The consensus of those present was that we might want to arrange a similar exercise again next year – possibly at a full committee meeting. This would certainly raise awareness and the profile of SACRE, and it should allow for a more in-depth, informal discussion on matters relating to Religious Education. The overriding view of those present was that the investment the council makes in supporting SACRE is good value, especially as RE has a key role to play in encouraging a broad and meaningful understanding of different faiths and views.
- 3.5 So the informally agreed action coming out that meeting was:
- **Raising the profile** – this committee take the Annual report next year, and the Chairman report the views expressed to the council as part of her statement. Having a slot in the members seminar programme was also suggested.
 - **Scrutiny Work** – should at some point the committee look at wider issues around community cohesion, in a county with not a great deal of racial diversity what role can RE play in community cohesion, promoting tolerance and tackling racism and hate crime. Asking such questions as: Has curriculum development kept pace with the academic and intellectual developments that might help pupils to make sense of our complex multi-religious and multi-secular society?
 - **Joint working Opportunities** – being alert to the benefits and opportunities of helping each other out on areas of mutual interest.

4.0 CYPS Financial Pressures

- 4.1 Can members please note that Howard Emmett, Assistant Director - Strategic Resources (CYPS), Integrated Finance (CSD) will now brief group spokespersons at their Mid Cycle Briefing on Friday 23 July 2021 at 10am
- Update on the latest financial position in relation to local authority maintained schools
 - highlight the areas presenting with the most significant financial pressures facing CYPS.
- 4.2 The Chairman has agreed that an invite be extended to all committee members.

5.0 Recommendation

- 5.1 The Committee is asked to confirm, comment or add to the areas of work listed in the Work Programme schedule.

DANIEL HARRY
SCRUTINY TEAM LEADER
County Hall,

Northallerton

Author and Presenter of Report: Ray Busby

Contact Details: Tel: 01609 532655

E-mail: ray.busby@northyorks.gov.uk

17 June 2021 Background Documents Nil

This page is intentionally left blank

YOUNG PEOPLES OVERVIEW AND SCRUTINY COMMITTEE

Scope

The interests of young people, including education, care and protection and family support.

Meeting Details

Committee Meetings	Friday 3 September 2021 at 10am
	Friday 10 December 2021 at 10am
	Friday 25 February 2022 at 10am

Programme

Friday 3 September 2021 Committee Meeting at 10am			
TOPIC	CONTENT	METHOD AND PURPOSE	LEAD
Adoption procedures	An overview of Adoption arrangements, including planned work on the directorate's policies and procedures in relation to adoption.	Presentation – extending scope to service issues during pandemic.	Martin Kelly and Mel Hutchinson
Young Carers	Especially those who support adults with mental health issues. The practical and emotional support made available to young people to ensure they enjoy and achieve, just like their peers. How NYCC works in partnership with schools, and GPs to identify young carers, raise much-needed awareness of their situation, and offer the support that they need, when they need it.	Consideration of Briefing Paper	
Safeguarding	Chair of NYSCP Executive and Independent Scrutineer's Annual Report	Review Published Reports	Prof Maggie Atkinson
Medical Education Service	How NYCC supports children in and out of education who have medical condition. Review/Update of implementation	Review Progress and Service Update	Jane le Sage and Carol-ann Howe
Education is our Greatest Liberator	Annual Attainment report	Review Published Report	Amanda Newbold
Friday 10 December Committee Meeting at 10am			

School Place Planning – Shaping future education provision	Update on the overall picture, both current and forecast, in terms of pupil numbers in North Yorkshire schools and report on the issues and challenges for school place planning in North Yorkshire. (revisiting consideration by the committee in December 2017)	Report	Andrew Dixon
Early Years Sector	Understanding of the range of private providers supporting vulnerable children and families	Review	
Childrens Mental Helath	how the CAMHS service is coping with increase in demand, the effectiveness of surge planning, and any lessons learned		
Friday 10 December 2021 Committee meeting at 10am			

Mid Cycle Briefing Items at 10am

Date	Probable Item
Friday 23 July 2021	Financial Pressures Elective Home Education OFSTED inspection update Youth Accommodation Pathway - current situation
Friday 15 October 2021	Healthy Child Programme - progress and situation report
Friday 28 January 2022	
Friday 14 April 2022	